
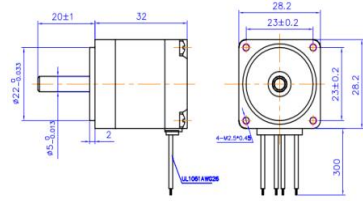


Stepper Motor & Accessories (JA)

SKU	PICTURE	NAME	Weight (g)
3A011		<p>NEMA17 Stepper Motor 34mm Long, 1.5A with 720mm Cable</p>	
3A012		<p>NEMA17 Stepper Motor 40mm Long, 1.2A with 720mm Cable</p>	
3A050		<p>NEMA17 Stepper Motor 42BYGHW811 48mm Long, 2.5A with 720mm Cable</p>	
3A201	 <p data-bbox="284 1659 536 1715">JK42HS34-1304A-01F 1.8° 1.3A 34mm</p>	<p>34mm 1.3A D Shaft 42BYG Stepper Motor 1.8° NEMA17 JK42HS34-1304A-01F with 1 Meter Cable</p>	

<p>3A202</p>		<p>34mm 1.3A Round Shaft 42BYG Stepper Motor 1.8° NEMA17 JK42HS34-1334 with 1 Meter Cable</p>	
<p>3A203</p>	 <p>JK42HS40-1304F 1.8° 1.3A 0.41Nm 40mm</p>	<p>40mm 1.3A D Shaft 42BYG Stepper Motor NEMA17 JK42HS40-1304F Two phase four wire with 1 Meter Cable</p>	
<p>3A206</p>	 <p>JK42HS48-1684-08AF 1.8° 2.8V 1.68A 48mm</p>	<p>48mm D Shaft 42BYG Stepper Motor 1.8° NEMA17 JK42HS48-1684-08AF with 1 Meter Cable</p>	
<p>3A207</p>		<p>Nema11 Geard Stepr Motor, 0.67A Rate Current Shaft 6mm JK28HS51-0674PG5.18減速比 1:5.18</p>	

JA001

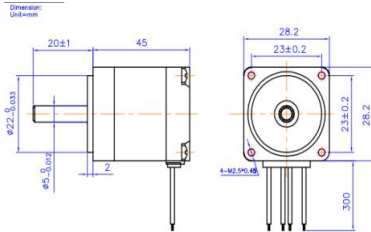
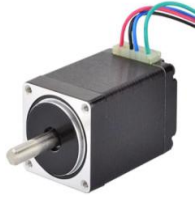


相数 Phase	2		Comment
步距角 Step Angle	1.8	deg.	
电压 Voltage	4.6	V	
相电流 Current	0.67	A	
相电阻 Resistance	6.8	Ω	
相电感 Inductance	4.9	mH	
静力矩 Holding Torque	0.095	N.m	
绝缘等级 Insulation Class	B		
重量 Mass	0.14	kg	

JK28HS32-0674
NEMA11 Stepper
Motor (With 300MM
Cable, Round Shaft
1.8 °)

140

JA002

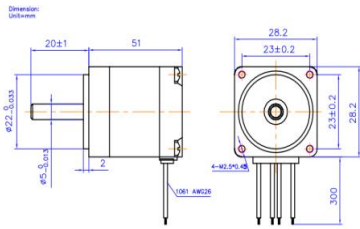
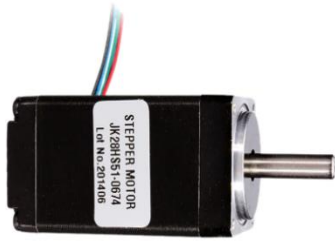


相数 Phase	2		Comment
步距角 Step Angle	1.8	deg.	
电压 Voltage	4.6	V	
相电流 Current	0.67	A	
相电阻 Resistance	6.8	Ω	
相电感 Inductance	4.9	mH	
静力矩 Holding Torque	0.095	N.m	
绝缘等级 Insulation Class	B		
重量 Mass	0.14	kg	

JK28HS45-0674
NEMA11 Stepper
Motor (With 300MM
Cable, Round Shaft
1.8 °)

140

JA003



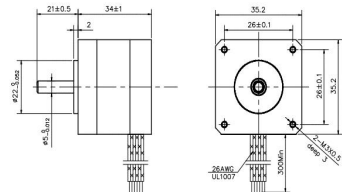
相数	Phase	2		Comment
步距角	Step Angle	1.8	deg.	
电压	Voltage	6.16	V	
相电流	Current	0.67	A	
相电阻	Resistance	9.2	Ω	
相电感	Inductance	7.2	mH	
静力矩	Holding Torque	1200	g.cm	
绝缘等级	Insulation Class	B		
重量	Mass	0.2	kg	

JK28HS51-0674
NEMA11 Stepper
Motor (With 300MM
Cable, Round Shaft
1.8 °)

200

JA004

NEMA 14 2 Phase Hybrid Stepper Motor
 Motor Length: 34MM



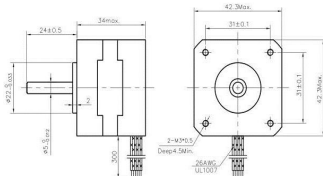
相数	Phase	2		Comment
步距角	Step Angle	1.8	deg.	
电压	Voltage	2.7	V	
相电流	Current	1	A	
相电阻	Resistance	2.7±10%	Ω	
相电感	Inductance	4.3±20%	mH	
静力矩	Holding Torque	1400	g.cm	
绝缘等级	Insulation Class	B		
重量	Mass	0.18	kg	

JK35HS34-1004
NEMA14 2 Phase
Hybrid Stepper Motor
(With 300MM
Cable, Round Shaft
1.8 °)

Note: 1.8 ° Step Angle
34mm for Printers, Robots,
Textile Machine and
Medical

180

JA005

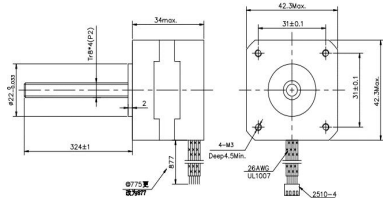


相数 Phase	2		Comment
步距角 Step Angle	1.8	deg.	
电压 Voltage	12	V	
相电流 Current	0.4	A	
相电阻 Resistance	30	Ω	
相电感 Inductance	35	mH	
静力矩 Holding Torque	2.8	kg.cm	
绝缘等级 Insulation Class	B		
重量 Mass	0.22	kg	

JK42HS34-0404
NEMA17 Stepper
Motor (Round Shaft
1.8 °)

220

JA006



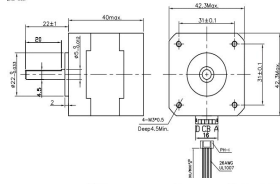
相数 Phase	2		Comment
步距角 Step Angle	1.8	deg.	
电压 Voltage	2.8	V	
相电流 Current	1.33	A	
相电阻 Resistance	2.1	Ω	
相电感 Inductance	2.5	mH	
静力矩 Holding Torque	2.6	kg.cm	
绝缘等级 Insulation Class	B		
重量 Mass	0.22	kg	

JK42HS34-1334-04LA
NEMA17 3D Printer Z
Axis Trapezoidal Lead
Screw

Note: Lead of Lead Screw
 TR8*4(P2), Length 324MM,
 Direct Output

220

JA007

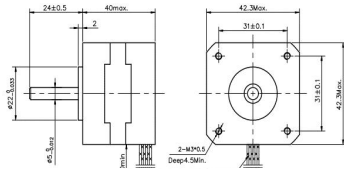


相数	Phase	2		Comment
步距角	Step Angle	1.8	deg.	
电压	Voltage	4.0	V	
相电流	Current	1.2	A	
相电阻	Resistance	2±10%	Ω	
相电感	Inductance	4.5±20%	mH	
静力矩	Holding Torque	400	mN.m	
绝缘等级	Insulation Class	B		
重量	Mass	0.24	kg	

**JK42HS40-1204D
(17HS3001-20B)
NEMA17 Stepper
Motor
(D Shaft 1.8 °)**

240

JA008

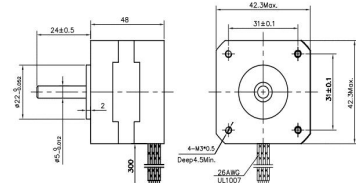


相数	Phase	2		Comment
步距角	Step Angle	1.8	deg.	
电压	Voltage	2.55	V	
相电流	Current	1.7	A	
相电阻	Resistance	1.5±10%	Ω	
相电感	Inductance	2.3±20%	mH	
静力矩	Holding Torque	4.2	kg.cm	
绝缘等级	Insulation Class	B		
重量	Mass	0.24	kg	

**JK42HS40-1704
(17HS4401)
NEMA17 Stepper
Motor
(With 500MM Cable,
Round Shaft 1.8 °)**

240

JA009

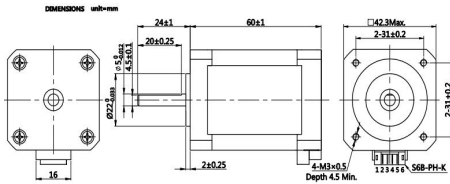
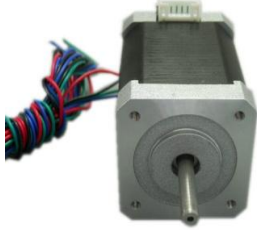


相数 Phase	2		Comment
步距角 Step Angle	1.8	deg.	
电压 Voltage	2.8	V	
相电流 Current	1.68	A	
相电阻 Resistance	1.65	Ω	
相电感 Inductance	2.3	mH	
静力矩 Holding Torque	5.0	kg.cm	
绝缘等级 Insulation Class	B		
重量 Mass	0.34	kg	

JK42HS48-1684-01
NEMA17 Stepper
Motor
(With 300MM Cable,
Round Shaft 1.8 °)

340

JA010

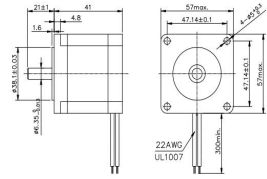
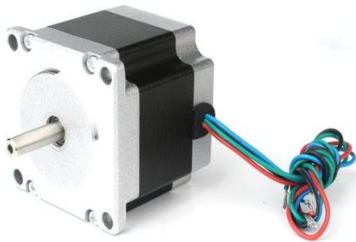


1. Number of Phase	2
2. Step Angle	1.8° deg.
3. Rated Voltage	5.1 V
4. Rated Current/Phase	1.7 A (峰值 Peak Value)
5. Phase Resistance	3.0 Ω±0.1(20°C)
6. Phase Inductance	6.2 mH±20%(1kHz 1V RMS)
7. Holding Torque	7.3 kg.cm
8. Insulation Class	B (130°) ; 耐压 80K Max.
9. Weight	0.5 kg
Specifications	

JK42HS60-1704A
NEMA17 Stepper
Motor
(Motor Cable Length
30-50 Random, D
Shaft 1.8 °)

500

JA011

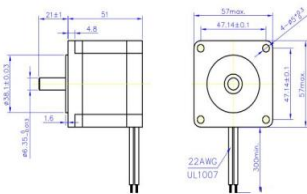


相数	2	备注
步距角	1.8 deg.	
电压	1.96 V	
相电流	2.8 A	
相电阻	0.7 Ω	
相电感	1.4 mH	
静力矩	0.55 N.m	
转动惯量	0.12 kg.cm ²	
绝缘等级	B	
重量	0.45 kg	

JK57HS41-2804
NEMA23 Stepper Motor
 (Motor Cable Length Random, Round Shaft 1.8°)

450

JA043

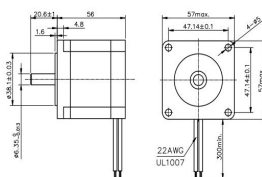
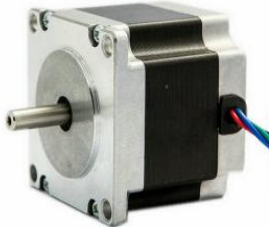


相数	Phase	2	
步距角	Step Angle	1.8	deg.
电压	Voltage	2.3	V
相电流	Current	2.8	A
相电阻	Resistance	0.83	Ω
相电感	Inductance	2.2	mH
静力矩	Holding Torque	10.1	kg.cm
绝缘等级	Insulation Class	B	
重量	Mass	0.59	kg

JK57HS51-2804
NEMA23 Stepper Motor
 (With 300MM Cable,, Round Shaft 1.8°)

590

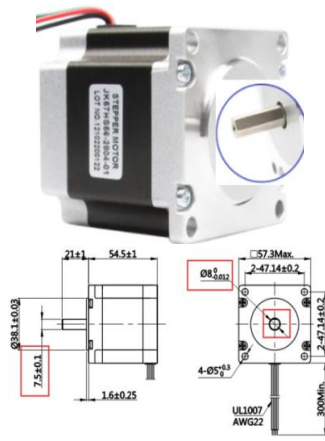
JA012



JK57HS56-2804
NEMA23 2 Phase Hybrid Stepper Motor
 (Motor Cable Length 300MM, Round Shaft 1.8°)

280

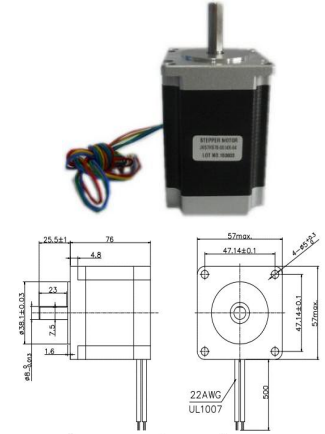
JA013



JK57HS56-2804-13
NEMA23 2 Phase
Hybrid Stepper Motor
(Motor Cable Length
300MM, D Shaft 1.8 °
)

280

JA014

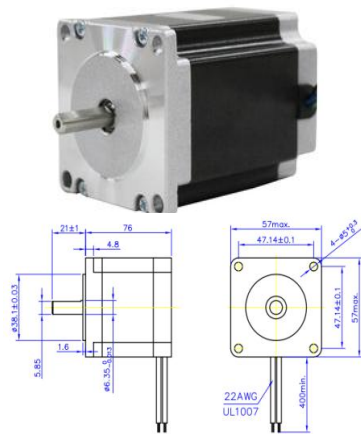


JK57HS76-3004x-04
NEMA23 Stepper
Motor 3A 1.5Nm
(D Shaft 1.8 °)

1100

相数	2		备注
步距角	1.8	deg.	前轴加轴套
电压	3.3	V	
相电流	3	A	
相电阻	1.1	Ω	
相电感	2.3	mH	
静力矩	1.5	N.m	
转动惯量	0.48	kg.cm ²	
绝缘等级	B		
重量	1.1	kg	

JA015



JK57HS76-2804-05
NEMA23 Stepper
Motor
(D Shaft 1.8 °)

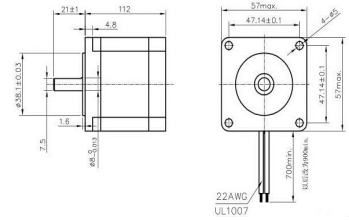
1100

Phase 相数	2		
Step Angle 步距角	1.8	deg.	
接线方式			
Voltage 电压	3.08	V	
Current 相电流	2.8	A	
Resistance 相电阻	1.1	Ω	
Inductance 相电感	3.6	mH	
Holding Torque 静力矩	1.89	N.m	
Insulation Class 绝缘等级	B		
Mass 重量	1.1	kg	

JA016



Dimension:
Unit:mm

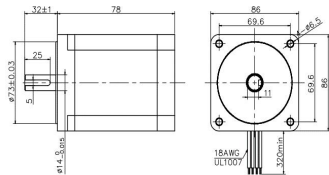


相数 Phase	2		备注 Comment
步距角 Step Angle	1.8	deg.	
电压 Voltage	4.8	V	
相电流 Current	3	A	
相电阻 Resistance	1.6	Ω	
相电感 Inductance	7.5	mH	
静力矩 Holding Torque	28	kg.cm	
绝缘等级 Insulation Class	B		
重量 Mass	1.5	kg	

JK57HS112-3004-03
NEMA23 Stepper
Motor
(D Shaft 1.8 °)

1500

JA017

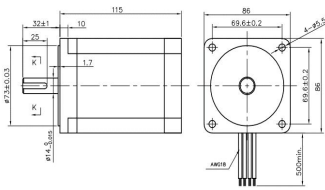


Phase	相数	2		Comment 备注
Step Angle	步距角	1.8	deg.	喷漆端盖
Voltage	电压	2.06	V	
Current	相电流	5.5	A	
Resistance	相电阻	0.375±10%	Ω	
Inductance	相电感	3.4±20%	mH	
Holding Torque	静力矩	4.5	N.m	
Insulation Class	绝缘等级	B		
Mass	重量	2.3	kg	

JK86HS78-5504X-01
86 (NEMA34) Hybrid 2
Phase Stepping Motor

3500

JA018

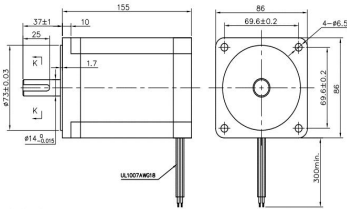


Phase	相数	2		Comment 备注
Step Angle	步距角	1.8	deg.	
	接线方式			
Voltage	电压	3.6	V	
Current	相电流	6	A	
Resistance	相电阻	0.6±10%	Ω	
Inductance	相电感	6.5±20%	mH	
Holding Torque	静力矩	8.7	N.m	
Insulation Class	绝缘等级	B		
Mass	重量	3.8	kg	

JK86HS115-6004-05
86 (NEMA34) Hybrid 2
Phase Stepping Motor

3500

JA019

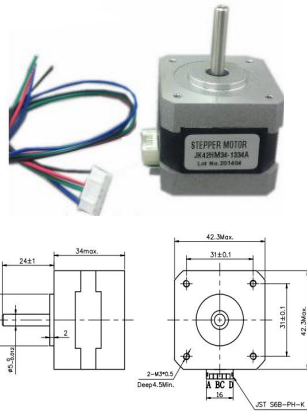


Phase	相数	2		Comment 备注
Step Angle	步距角	1.8	deg.	
	接线方式			
Voltage	电压	4.08	V	
Current	相电流	6	A	
Resistance	相电阻	0.68±10%	Ω	
Inductance	相电感	9±20%	mH	
Holding Torque	静力矩	12	N.m	
Insulation Class	绝缘等级	B		
Mass	重量	5.6	kg	

JK86HS155-6004A 86
(NEMA34) Hybrid 2
Phase Stepping Motor

3500

JA020

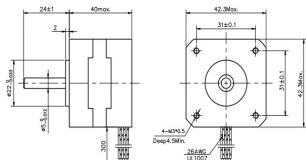


相数 Phase	2		Comment
步距角 Step Angle	0.9	deg.	
电压 Voltage	2.79	V	
相电流 Current	1.33	A	
相电阻 Resistance	2.1	Ω	
相电感 Inductance	4.2	mH	
静力矩 Holding Torque	2.2	kg.cm	
绝缘等级 Insulation Class	B		
重量 Mass	0.22	kg	

JK42HM34-1334A
NEMA17 2 Phase
Hybrid Stepper Motor
(D Shaft 0.9 °)

220

JA021

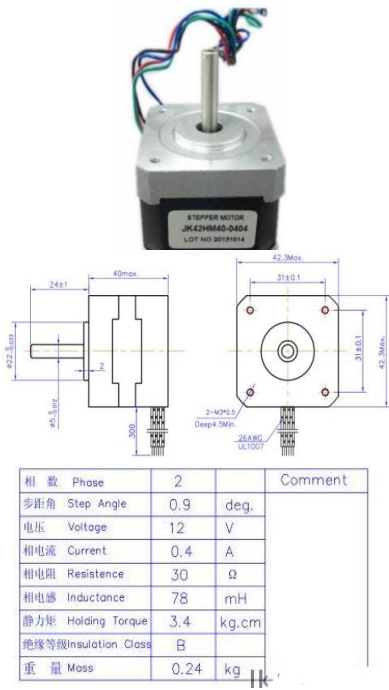


相数 Phase	2		Comment
步距角 Step Angle	0.9	deg.	
电压 Voltage	2.77	V	
相电流 Current	1.68	A	
相电阻 Resistance	1.65	Ω	
相电感 Inductance	3.2	mH	
静力矩 Holding Torque	3.3	kg.cm	
绝缘等级 Insulation Class	B		
重量 Mass	0.24	kg	

JK42HM40-1684
NEMA17 2 Phase
Hybrid Stepper Motor
(With 300MM Cable,
Round Shaft 0.9 °)

240

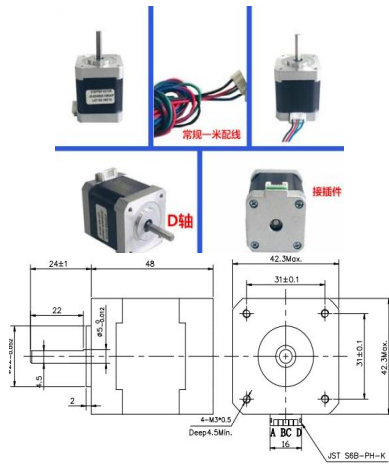
JA022



JK42HM40-0404
NEMA17 2 Phase
Hybrid Stepper Motor
(Round Shaft 0.9 °)

250

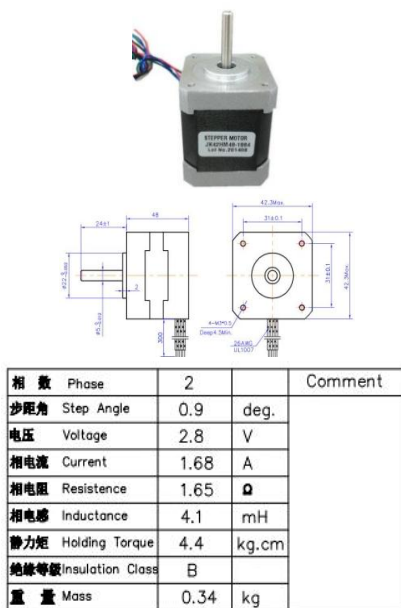
JA023



JK42HM48-1684AF
NEMA17 2 Phase
Hybrid Stepper Motor
(D Shaft 0.9 °)

340

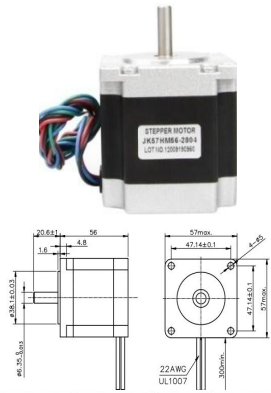
JA024



JK42HM48-1684
NEMA17 2 Phase
Hybrid Stepper Motor
(Round Shaft 0.9 °)

360

JA025

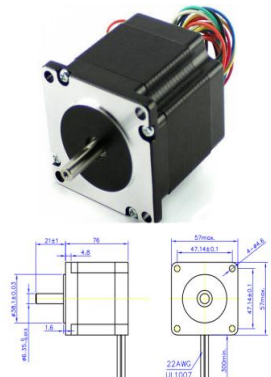


相数 Phase	2		备注 Comment
步距角 Step Angle	0.9	deg.	
电压 Voltage	2.52	V	
相电流 Current	2.8	A	
相电阻 Resistance	0.9±10%	Ω	
相电感 Inductance	3.3±20%	mH	
静力矩 Holding Torque	12	kg.cm	
绝缘等级 Insulation Class	B		
重量 Mass	0.68	kg	

JK57HM56-2804
NEMA23 Stepper
Motor
(Round Shaft 0.9 °)

680

JA026

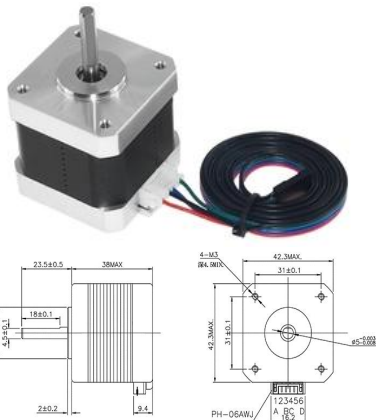


相数 Phase	2		Comment
步距角 Step Angle	0.9	deg.	
电压 Voltage	3.2	V	
相电流 Current	2.8	A	
相电阻 Resistance	1.15	Ω	
相电感 Inductance	5.6	mH	
静力矩 Holding Torque	18	kg.cm	
绝缘等级 Insulation Class	B		
重量 Mass	1.1	kg	

JK57HM76-2804
NEMA23 Stepper
Motor
(Round Shaft 0.9 °)

360

JA027



特性	规格	特性	规格
相数	2	步距角	1.8° ± 0.09°
额定电压	DC 3.6 V	额定电流	DC 1.5 A / 相
相电阻(20°C)	2.4 × (1 ± 15%) Ω / 相	相电感 (1KHz)	3.7 × (1 ± 20%) mH / 相
保持转矩	≥ 420mN.m	定位转矩	15 mN.m REF.
转向 (轴伸向看)	A-AB-B-顺时针	最大空载启动频率	≥ 1500 PPS
最大空载运行频率	≥ 1900 PPS	绝缘电阻	≥ 100 MΩ (DC 500V)
电气强度	AC600V/1mA/1S	绝缘等级	B 级
转动惯量	57.3 g.cm ²	质量	255 g REF.

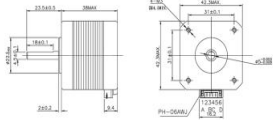
Silver 17HS4401
NEMA17 Stepper
Motor (Round
Shaft)

255

JA028



特性	规格	特性	规格
相数	2	步距角	1.8° ± 0.05°
额定电压	DC 3.0 V	额定电流	DC 1.5 A / 相
额定速度 (20°C)	≥ 8× (1 ± 10%) r/min	轴电压	≤ 1.7× (1 ± 20%) mV / 相
保持转矩	≥ 0.20N·m	空载转速	≥ 48× r/min
转向 (默认向前)	A-AB-B-顺时针	最大空载起停频率	≥ 1000 PPS
最大空载运行频率	≥ 1800 PPS	绝缘电阻	≥ 100 MΩ (DC 500V)
电气强度	AC1000V/1min/1S	绝缘等级	B 级
转动惯量	≤ 7.5 g·cm ²	噪音	≤ 25dB (REF.)



**Black 17HS4401S
NEMA17 Stepper
Motor (Round
Shaft)**

255

JA029



**42BYGH34 NEMA17
Stepper Motor**

260

JA030



**42BYGH40 NEMA17
Stepper Motor**

280

JA031



**42BYGH48 NEMA17
Stepper Motor**







290

JA032



**42BYGH60 NEMA17
Stepper Motor**

300


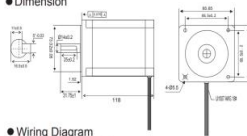
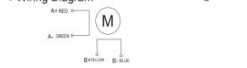

JA033		57BYGH41 NEMA23 Stepper Motor	610
JA034		57BYGH56 NEMA23 Stepper Motor	650
JA035		57BYGH76 NEMA23 Stepper Motor	1000
JA036		57BYGH100 NEMA23 Stepper Motor	1690
JA037		57BYGH112 NEMA23 Stepper Motor	1500
JA038		86BYGH80 NEMA34 Stepper Motor (4.5NM Torque)	2250

JA039		86BYGH118 NEMA34 Stepper Motor (8.5NM Torque)	2250
-------	--	--	------

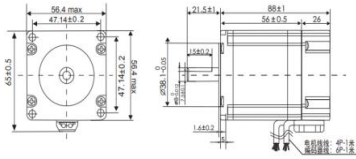
JA040		86BYGH156 NEMA34 Stepper Motor 12NM Torque	2250
-------	---	---	------

JA041		60 High Speed Closed Loop Stepper Motor (60-84 Closed Loop 2.8N)	1900
-------	--	---	------

JA042		60 High Speed Closed Loop Stepper Motor (60-112 Closed Loop 4.8N)	2000
-------	---	--	------

JA061	 <p>● Dimension</p>  <p>● Wiring Diagram</p>  <p>1.8° 86MM High Torque Hybrid Stepping Motor</p> <table border="1" data-bbox="239 1881 574 2038"> <thead> <tr> <th>Item</th> <th>Specifications</th> </tr> </thead> <tbody> <tr> <td>Step Angle</td> <td>1.8°</td> </tr> <tr> <td>Step Angle Accuracy</td> <td>±5% (at a step no. 1 load)</td> </tr> <tr> <td>Resistance Accuracy</td> <td>±10%</td> </tr> <tr> <td>Inductance Accuracy</td> <td>±20%</td> </tr> <tr> <td>Temperature R_{ise}</td> <td>80°C (at rated current, 2 phase on)</td> </tr> <tr> <td>Ambient Temperature</td> <td>-20°C ~ +50°C</td> </tr> <tr> <td>Insulation R_e sistance</td> <td>100MΩ Min. 500VDC</td> </tr> <tr> <td>Dielectric S_t rength</td> <td>500VAC for 1 min. no load</td> </tr> <tr> <td>Shaft R_a dial P₁ lay</td> <td>0.02Max. (450g load)</td> </tr> <tr> <td>Shaft Axial P₁ lay</td> <td>0.08Max. (450g load)</td> </tr> <tr> <td>Max radial force</td> <td>20kg/cm from the flange</td> </tr> <tr> <td>Max axial force</td> <td>10N</td> </tr> </tbody> </table> <p>● 86MM Hybrid Stepping Motor Specifications</p> <table border="1" data-bbox="239 2049 574 2116"> <thead> <tr> <th>Model No</th> <th>Current (A)</th> <th>Phase</th> <th>Insulation Class</th> <th>Speed (rpm)</th> <th>Holding Torque (kg-cm)</th> <th>Rated Torque (kg-cm)</th> <th>Motor Weight (kg)</th> <th>Mounting Flange Weight (kg)</th> <th>Motor Length (mm)</th> </tr> </thead> <tbody> <tr> <td>SL86STH118-6004A</td> <td>6</td> <td>0.5</td> <td>6</td> <td>85</td> <td>4</td> <td>2700</td> <td>3.8</td> <td>2.4</td> <td>118</td> </tr> </tbody> </table> 	Item	Specifications	Step Angle	1.8°	Step Angle Accuracy	±5% (at a step no. 1 load)	Resistance Accuracy	±10%	Inductance Accuracy	±20%	Temperature R _{ise}	80°C (at rated current, 2 phase on)	Ambient Temperature	-20°C ~ +50°C	Insulation R _e sistance	100MΩ Min. 500VDC	Dielectric S _t rength	500VAC for 1 min. no load	Shaft R _a dial P ₁ lay	0.02Max. (450g load)	Shaft Axial P ₁ lay	0.08Max. (450g load)	Max radial force	20kg/cm from the flange	Max axial force	10N	Model No	Current (A)	Phase	Insulation Class	Speed (rpm)	Holding Torque (kg-cm)	Rated Torque (kg-cm)	Motor Weight (kg)	Mounting Flange Weight (kg)	Motor Length (mm)	SL86STH118-6004A	6	0.5	6	85	4	2700	3.8	2.4	118	SL86STH118-6004A 86MM Stepper Motor	900
Item	Specifications																																																
Step Angle	1.8°																																																
Step Angle Accuracy	±5% (at a step no. 1 load)																																																
Resistance Accuracy	±10%																																																
Inductance Accuracy	±20%																																																
Temperature R _{ise}	80°C (at rated current, 2 phase on)																																																
Ambient Temperature	-20°C ~ +50°C																																																
Insulation R _e sistance	100MΩ Min. 500VDC																																																
Dielectric S _t rength	500VAC for 1 min. no load																																																
Shaft R _a dial P ₁ lay	0.02Max. (450g load)																																																
Shaft Axial P ₁ lay	0.08Max. (450g load)																																																
Max radial force	20kg/cm from the flange																																																
Max axial force	10N																																																
Model No	Current (A)	Phase	Insulation Class	Speed (rpm)	Holding Torque (kg-cm)	Rated Torque (kg-cm)	Motor Weight (kg)	Mounting Flange Weight (kg)	Motor Length (mm)																																								
SL86STH118-6004A	6	0.5	6	85	4	2700	3.8	2.4	118																																								

JA062

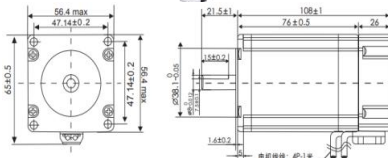


型号 Model No	SL57STH56-3004A-BH
相数 Number of phase	2
步距角 Step angle	1.8° ±5%
相电压 Rated Voltage: V	2.3
相电流 Current phase: A	3.0
相电阻 DC Resistance: Ω±10%	0.9
相电感 Phase Inductance: mH±20%	2.5
静力矩 Holding torque: N.m	1.26
绝缘电阻 Insulation resistance	100Mohm(500VDC)
绝缘等级 Insulation class	B
温升 Temp rise(Max)	80° C
编码器分辨率 Insulation resistance	1000Line
重量 Weight: kg	0.95

SL57STH56-3004A-BH
57MM Hybrid Stepper Motor

950

JA063

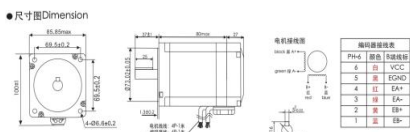


型号 Model No	SL57STH76-3004A-BH
相数 Number of phase	2
步距角 Step angle	1.8° ±5%
相电压 Rated Voltage: V	3.4
相电流 Current phase: A	3.0
相电阻 DC Resistance: Ω±10%	0.9
相电感 Phase Inductance: mH±20%	3.6
静力矩 Holding torque: N.m	1.89
绝缘电阻 Insulation resistance	100Mohm(500VDC)
绝缘等级 Insulation class	B
温升 Temp rise(Max)	80° C
编码器分辨率 Insulation resistance	1000Line
重量 Weight: kg	1.25

SL57STH76-3004A-BH
57MM Hybrid Stepper Motor

1250

JA064

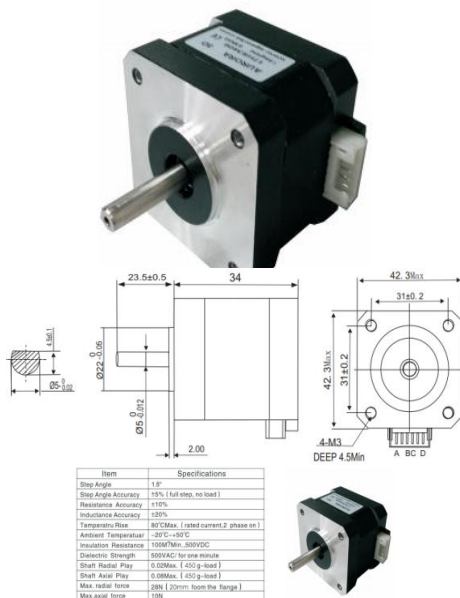


型号 Model No	SL86STH80-5504A-BH
相数 Number of phase	2
步距角 Step angle	1.8° ±5%
相电流 Current phase: A	5.5
相电阻 DC Resistance: Ω±10%	0.42
相电感 Phase Inductance: mH±20%	3.5
静力矩 Holding torque: N.m	4.5
绝缘电阻 Insulation resistance	100Mohm(500VDC)
绝缘等级 Insulation class	B
温升 Temp rise(Max)	80° C
编码器分辨率 Insulation resistance	1000线
重量 Weight: kg	2.7

SL86STH80-5504A-BH
86MM Hybrid Stepper Motor

2700

JA065



Item	Specifications
Step Angle	1.8°
Step Angle Accuracy	±15% (full step, no load)
Resistance Accuracy	±10%
Inductance Accuracy	±5%
Temperature Rise	80°CMax. (rated current, 2 phase on)
Ambient Temperature	-20°C ~ +50°C
Insulation Resistance	100MΩMin. 500VDC
Dielectric Strength	500VAC for one minute
Shaft Radial Play	0.02Max. (400 g-load)
Shaft Axial Play	0.08Max. (400 g-load)
Max. radial force	28N (20mm from the flange)
Max. axial force	10N

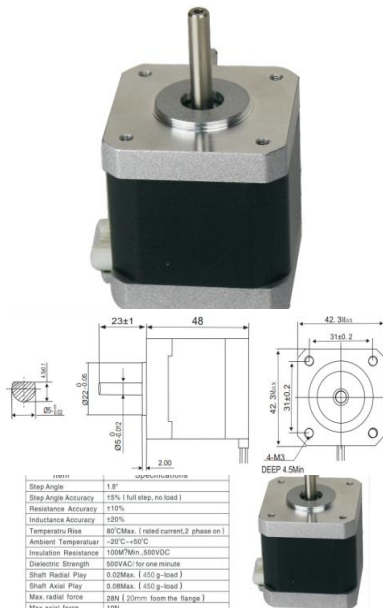
42MM Hybrid Stepping Motor Specifications

Model No.	Rated Voltage	Rated Current	Resistance	Inductance	Step Angle	Step Accuracy	Temperature Rise	Weight	Length
	V	A	Ω	mH	°	%	°C	g	mm
SL42STH34-1334A	2.8	1.33	2.1	2.5	2.2	4	35	0.22	120

SL42STH34-1334A
42MM High Torque Hybrid Stepping Motor

400

JA066



Item	Specifications
Step Angle	1.8°
Step Angle Accuracy	±15% (full step, no load)
Resistance Accuracy	±10%
Inductance Accuracy	±5%
Temperature Rise	80°CMax. (rated current, 2 phase on)
Ambient Temperature	-20°C ~ +50°C
Insulation Resistance	100MΩMin. 500VDC
Dielectric Strength	500VAC for one minute
Shaft Radial Play	0.02Max. (400 g-load)
Shaft Axial Play	0.08Max. (400 g-load)
Max. radial force	28N (20mm from the flange)
Max. axial force	10N

42MM Hybrid Stepping Motor Specifications

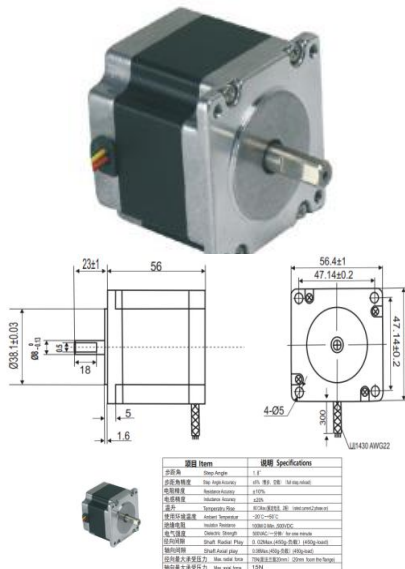
Model No.	Rated Voltage	Rated Current	Resistance	Inductance	Step Angle	Step Accuracy	Temperature Rise	Weight	Length
	V	A	Ω	mH	°	%	°C	g	mm
SL42STH48-1204A	24	1.2	4.2	8	4.4	4	68	0.35	200

SL42STH48-1684A
42MM High Torque Hybrid Stepping Motor

-----Disable this SKU, same as 3A013

停用此SKU, 和 3A013 是同款, 有需求请下载 3A013

JA067



項目	Item	規格	Specifications
步角	Step Angle	1.8°	
步角精確度	Step Accuracy	±15% (full step, no load)	
電阻精確度	Resistance Accuracy	±10%	
電感精確度	Inductance Accuracy	±5%	
溫度上升	Temperature Rise	80°CMax. (rated current, 2 phase on)	
環境溫度	Ambient Temperature	-20°C ~ +50°C	
絕緣電阻	Insulation Resistance	100MΩMin. 500VDC	
介電強度	Dielectric Strength	500VAC for one minute	
軸徑徑向跳動	Shaft Radial Play	0.02Max. (400 g-load)	
軸徑軸向跳動	Shaft Axial Play	0.08Max. (400 g-load)	
最大徑向力	Max. radial force	28N (20mm from the flange)	
最大軸向力	Max. axial force	10N	

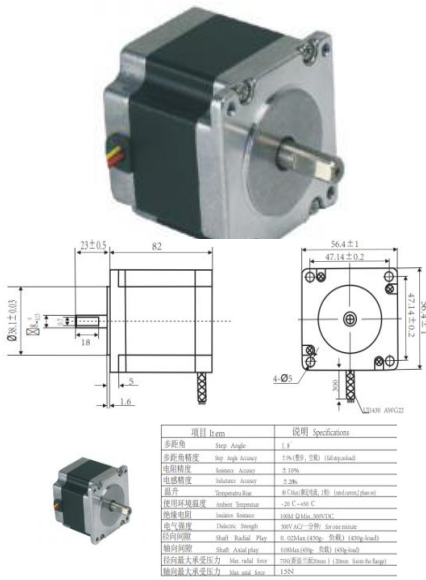
57MM Hybrid Stepping Motor Specifications

Model No.	Rated Voltage	Rated Current	Resistance	Inductance	Step Angle	Step Accuracy	Temperature Rise	Weight	Length
	V	A	Ω	mH	°	%	°C	g	mm
SL57STH56-2804A	24	2.8	1.1	2.5	12.6	4	58	0.7	56

SL57STH56-2804A
57MM Hybrid Stepping Motor

480

JA068



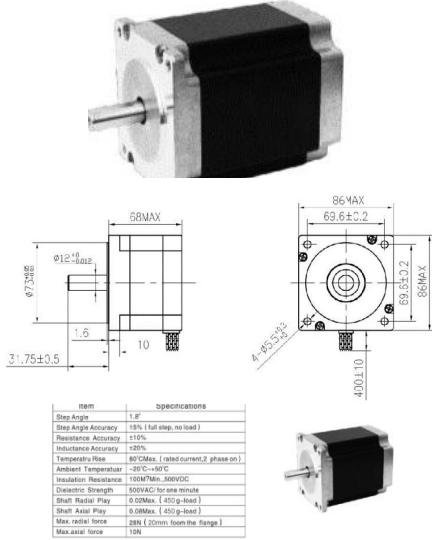
SL57STH82-4004A
57MM Hybrid Stepping Motor

500

●性能規格書 Hybrid Stepping Motor Specifications

电机型号 Model No	电压 Volt	电阻 Phase Resistance	电感 Phase Inductance	步距角 Step Angle	轴径 Shaft Dia	轴长 Shaft Length	重量 Weight	长度 Length
单轴 Single shaft	V	Ω	mH	deg	mm	mm	kg	mm
XY57STH82-4004A	2.44	4.2	0.6	2.2	18	4	520	1.2
							0.68	82

JA069



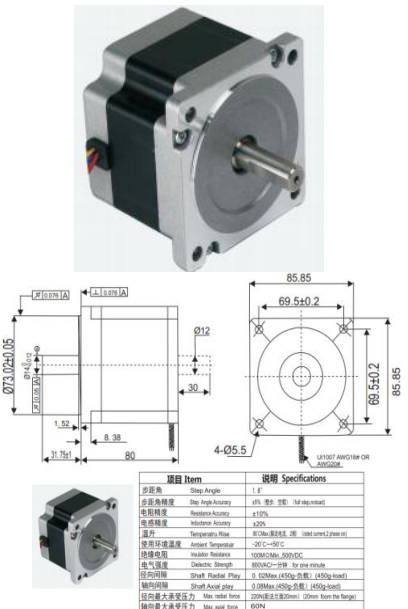
SL86STH65-5904A
86MM High Torque Hybrid Stepping Motor

580

●86MM Hybrid Stepping Motor Specifications

Model No	Current Phase	Resistance Phase	Inductance Phase	Step Angle	Shaft Dia	Shaft Length	Weight	Length
XY86STH65-5904A	A	Ω	mH	deg	mm	mm	kg	mm
	0.5	0.2	1.7	2.2	18	4	200	1.2
							0.6	86

JA070



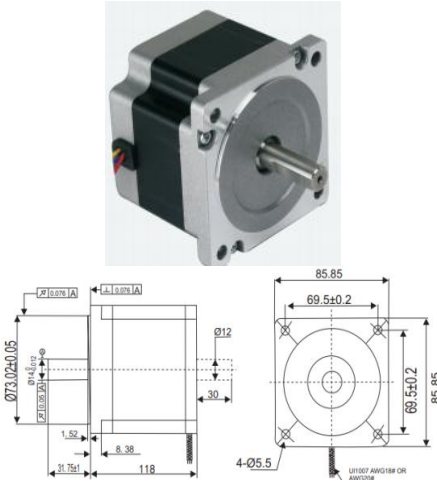
SL86STH80-5504A
86MM Hybrid Stepping Motor

600

●性能規格書 Hybrid Stepping Motor Specifications

电机型号 Model No	电压 Volt	电阻 Phase Resistance	电感 Phase Inductance	步距角 Step Angle	轴径 Shaft Dia	轴长 Shaft Length	重量 Weight	长度 Length
单轴 Single shaft	V	Ω	mH	deg	mm	mm	kg	mm
SL86STH80-5504A	5.5	0.42	3.5	45	4	1400	2.3	80

JA071



SL86STH118-6004A
86MM Hybrid Stepping Motor

650

項目	Item	規格	Specifications
步距角	Step Angle	1.8°	
步距角精度	Step Angle Accuracy	±0.1%	1st time install
電機轉速	Rotational Speed	1200 RPM	
電機轉速精度	Rotational Accuracy	±0.5%	
壽命	Operative Time	50,000 Hours	20°C, 50%RH, 100% Duty
操作溫度範圍	Ambient Temperature	-20°C~+50°C	
儲存溫度	Storage Temperature	-30°C~+70°C	
電氣強度	Dielectric Strength	500VAC-1min	for one minute
絕緣材料	Insulation Material	UL94V-0	
絕緣等級	Insulation Class	B	
絕緣材料	Insulation Material	UL94V-0	
絕緣等級	Insulation Class	B	
絕緣材料	Insulation Material	UL94V-0	
絕緣等級	Insulation Class	B	

NEMA17 Hybrid Stepping Motor Specifications						
电机型号	相数	电压	相序	静力矩	空载转速	重量
Model No	Phase	Voltage	Phase	Static Torque	Idle Speed	Weight
单轴 Single shaft	A	DC	step	kg-cm	rpm	g-cm
SL86STH118-6004A	6	0.5	6	85	4	2700 3.8 2.4

JA044



Upgraded NEMA17 Stepper Steel and Rubber Vibration Dampers
Size:51.8*51*6MM

50

JA045



Upgraded NEMA 17 Stepper Motor Shock Absorber Steel and Rubber Vibration Damper
Size:54*54*7MM

50

JA046



NEMA17 Stepper Motor Wood Shock Absorber Damper
Thickness: 2MM
Size: 42mm x 42mm







停产






JA047




NEMA17 Stepper Motor Wood Shock Absorber Damper
Thickness: 3MM
Size: 42mm x 42mm

50

JA048		<p>Silver ID38MM NEMA23 Motor Vibration Damper Size:56*56*6MM</p>	98
JA049		<p>Silver ID40MM NEMA23 Motor Vibration Damper Size:57*57*6MM</p>	98
JA050		<p>Nema17 42 Stepper Motor Fixing Bracket Mounting Seat without Screws</p>	60
JA051		<p>Nema23 57 Stepper Motor Fixing Bracket Mounting Seat without Screws</p>	60
JA052		<p>Nema23 57 Stepper Motor Fixing Bracket Mounting Seat with Screws</p>	60
JA072		<p>Nema34 86 Stepper Motor Fixing Bracket Mounting Seat without Screws</p>	30

JA073		<p>Nema34 86 Stepper Motor Fixing Bracket Mounting Seat with Screws</p>	30
JA053		<p>Black N20 Plastic Motor Fixed Seat with Screw</p>	15
JA054	 <p>33.5mm 32.3mm 26.6mm</p>	<p>25MM DC Gear Motor Fixed Seat 370 DC Motor Bracket Intelligent Car Robot Accessories with Screws</p>	11
JA055	 <p>40mm 41.7mm 55.6mm</p>	<p>37MM Geared Motor Fixing Bracket with Screws</p>	34
JA056		<p>5840 Turbine Worm Reducer Motor Fixed Bracket 4058-31ZY 12V/24V Electric Motor Fixed Seat Frame with Screws</p>	80
JA057		<p>CM36 Gear Motor Fixed Frame with Screws</p>	80

JA058		JGY-370 Turbine Worm Gear Motor 12V Low Speed Motor 6V Self-locking Motor 4632 Worm Fixing Frame with Screws	80
JA059		Hot 775 DC Motor Bracket 750/755/795 7 Series Motor Base Electroplating Fixed Mounting Base Machine Seat Support Bracket with Screws	80
JA060		Hot 775 DC Motor Bracket 750/755/795 7 Series Motor Base Electroplating Fixed Mounting Base Machine Seat Support Bracket with Screws	80